

Service Note

OLED replacement guide for OnAir series

V1.01

Table of contents

1. Problem.....	3
2. Solution	3
3. Implementation	3
3.1) Solution for size difference.....	3
3.2) Solution for mirrored picture	3
4. Detailed implementation on OnAir 1500.....	4
4.1) Physical parts	4
4.2.1) Log in via FTP to upload the OLED firmware	4
4.2.2) Replace the firmware files	5
4.2.3) Perform a firmware update on the desk.....	5
5. Detailed implementation on OnAir 2500/3000	6
5.1) Physical parts	6
5.2.1) Log in via FTP to upload the OLED firmware	6
5.2.2) Replace the firmware files	7
5.2.3) Perform a firmware update on the desk.....	7
6. In case of any question	8

1. Problem

OLED displays known nature is that as used over time aging cause losing its original brightness. As new and better displays developed, manufacturers have to switch to newer type.
(Old PN: A943.061108)

Affected products:

OnAir 1500, OnAir 2500, 6 fader module for OnAir 2500 (and OnAir 3000)

2. Solution

Replace OLED to a new one. As the size/orientation of new OLED is different, it cannot fit into the old socket (rubber holder).

Therefore, OLED replacement Kit contains 1x OLED screen with the correct socket:

for OnAir 1500: 5118843-00, MECHASY,KIT,OA1500 OLED

for OnAir 2500/3000: 5118844-00, MECHASY,KIT,OA2500/3000 OLED

(Eg. for a 6 fader module, you need 6 pcs of the corresponding kit.)

3. Implementation

The new OLED's differences:

- Size is 2 mm bigger.
- Displays a mirrored image by default.

3.1) Solution for size difference

The ordered new OLED's comes with a new socket, you need to replace them together.

3.2) Solution for mirrored picture

The corresponding modified firmware file should be copied to the core and be uploaded to the affected modules. It will rotate the screen again into the right position.

Important notes:

- No recommended to replace only to the OLED to new type (5109463-00), without new matching socket.**
- Recommended to replace all OLEDs on the entire desk**
- Do not mix new and old OLEDs on the same module**

4. Detailed implementation on OnAir 1500

Before the replacement: highly recommended to reboot the system to check the correct bootup process. Then power the system off and remove the power cables.

4.1) Physical parts

On the A943.700000 **6 fader module** you need to replace all the seven OLED's and their socket (holder and lightpipe).

(You need 7x **5118843-00**)

On the A943.715000 **6 fader extension module** you need to replace all the six OLED's and their socket (holder and lightpipe)..

(You need 6x **5118843-00**)

4.2.1) Log in via FTP to upload the OLED firmware

Any FTP client (Total Commander, Filezilla, Microsoft Explorer) can easily be used as an FTP client to upload files to a WinCE subsystem.

You should be copy the files under the "Hard Disk\ DESK\Firmware" folder in the file system.

The default URL of the FTP server of the desired subsystem is:

[ftp://todesursache:pilzvergiftung@192.168."ID".10/Hard Disk](ftp://todesursache:pilzvergiftung@192.168.)

when

"ID" = is the system ID

Username: todesursache

Password: pilzvergiftung

In case of any modification the real IP address of the subsystem can also be found using the SystemViewer PC application, which can be found in Release Package.

If connected once to an OnAir subsystem, files can be uploaded or downloaded by drag and drop.

Note:

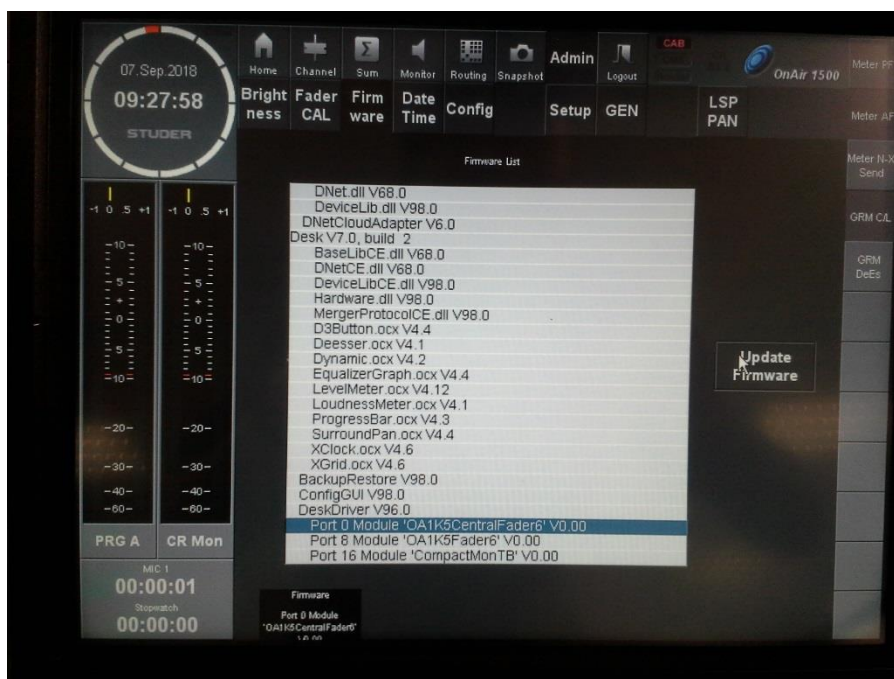
Files cannot be edited or copied locally on the OnAir subsystem. They must be downloaded first to the PC where they can be renamed or modified. After they have to be uploaded back to the OnAir subsystem.

4.2.2) Replace the firmware files

- Enter the Hard Disk\ DESK\Firmware folder via FTP
- Make a folder on your computer to save the original firmware files
- Copy the original firmware files from the core to this folder to save them
- Overwrite the necessary five files with the files from the distributor site.
- Do not delete, modify, or rename any other files
- Upload the five new firmware files to the core (remove OA1500_ OA2500_ from filename)
- Wait for the FTP client's successful transfer message and restart the core

4.2.3) Perform a firmware update on the desk

- Log in as an admin and enter the admin/firmware menu
- Roll the sidebar to the DeskDriver. and check the modules by name
- Perform the firmware update on the affected modules (with new OLED's) one by one
- When the update is performed and finished on the modules reboot the core.



5. Detailed implementation on OnAir 2500/3000

Before the replacement, highly recommended to reboot the system to check the correct bootup process. Then power the system off and remove the power cables.

5.1) Physical parts

On the A943.062000 **OnAir 2500 central module** you need to replace one OLED and the socket.

(You need 1x **5118844-00**)

On any type of **OnAir 2500/3000 fader module originally equipped with A943.061108 OLED screens** you need to replace six OLED's and their socket.

(You need 6x **5118844-00**)

5.2.1) Log in via FTP to upload the OLED firmware

Any FTP client (Total Commander, Filezilla, Microsoft Explorer) can easily be used as an FTP client to upload files to a WinCE subsystem.

You should be copy the files under the "Hard Disk\ DESK\Firmware" folder in the file system for OnAir 2500.

You should be copy the files under the "Hard Disk\ OA3000\Firmware" folder in the file system for OnAir 3000.

The default URL of the FTP server of the desired subsystem is:

[ftp://todesursache:pilzvergiftung@192.168."ID".10/Hard Disk](ftp://todesursache:pilzvergiftung@192.168.) (for OnAir 2500)

[ftp://todesursache:pilzvergiftung@192.168."ID".100/Hard Disk](ftp://todesursache:pilzvergiftung@192.168.) (for OnAir 3000 desk)

when

"ID" = is the system ID

Username: todesursache

Password: pilzvergiftung

In case of any modification the real IP address of the subsystem can also be found using the SystemViewer PC application, which can be found in Release Package.

If connected once to an OnAir subsystem, files can be uploaded or downloaded by drag and drop.

Note:

Files cannot be edited or copied locally on the OnAir subsystem. They must be downloaded first to the PC where they can be renamed or modified. After they have to be uploaded back to the OnAir subsystem.

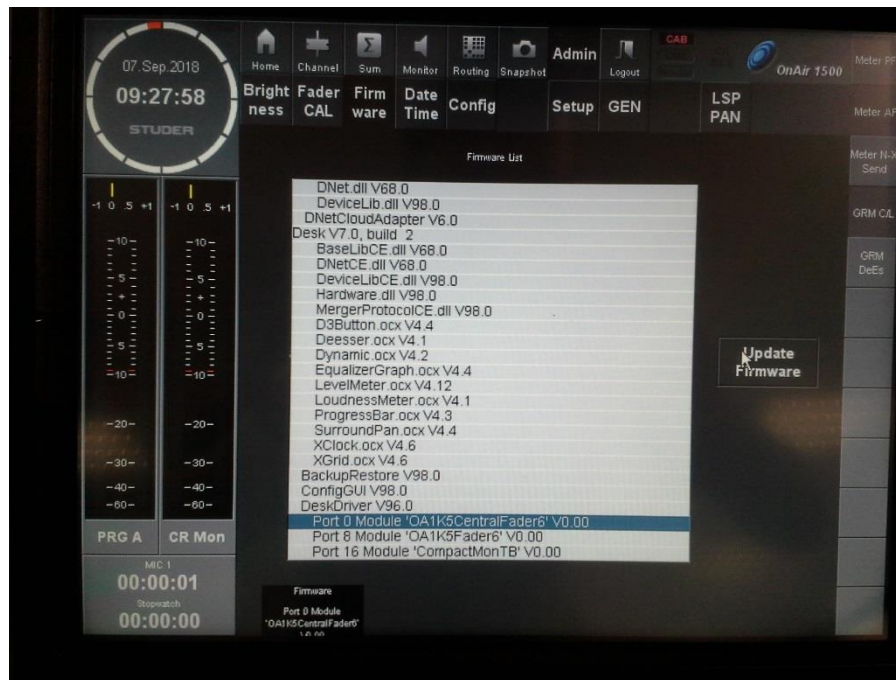
5.2.2) Replace the firmware files

- Enter the “Hard Disk\ DESK\Firmware” folder via FTP for OnAir 2500
- Enter the “Hard Disk\ OA3000\Firmware” folder via FTP for OnAir 3000
- Make a folder on your computer to save the original firmware files
- Copy the original firmware files from the core to this folder to save them
- Overwrite the necessary five files with the files from the distributor site.
- Do not delete, modify, or rename any other files
- Upload the five new firmware files to the core (remove OA1500_ OA2500_ from filename)
- Wait for the FTP client’s successful transfer message and restart the core

5.2.3) Perform a firmware update on the desk

- Log in as an admin and enter the admin/firmware menu
- Roll the sidebar to the DeskDriver. and check the modules by name

-Perform the firmware update on the affected modules (with new OLED's) one by one



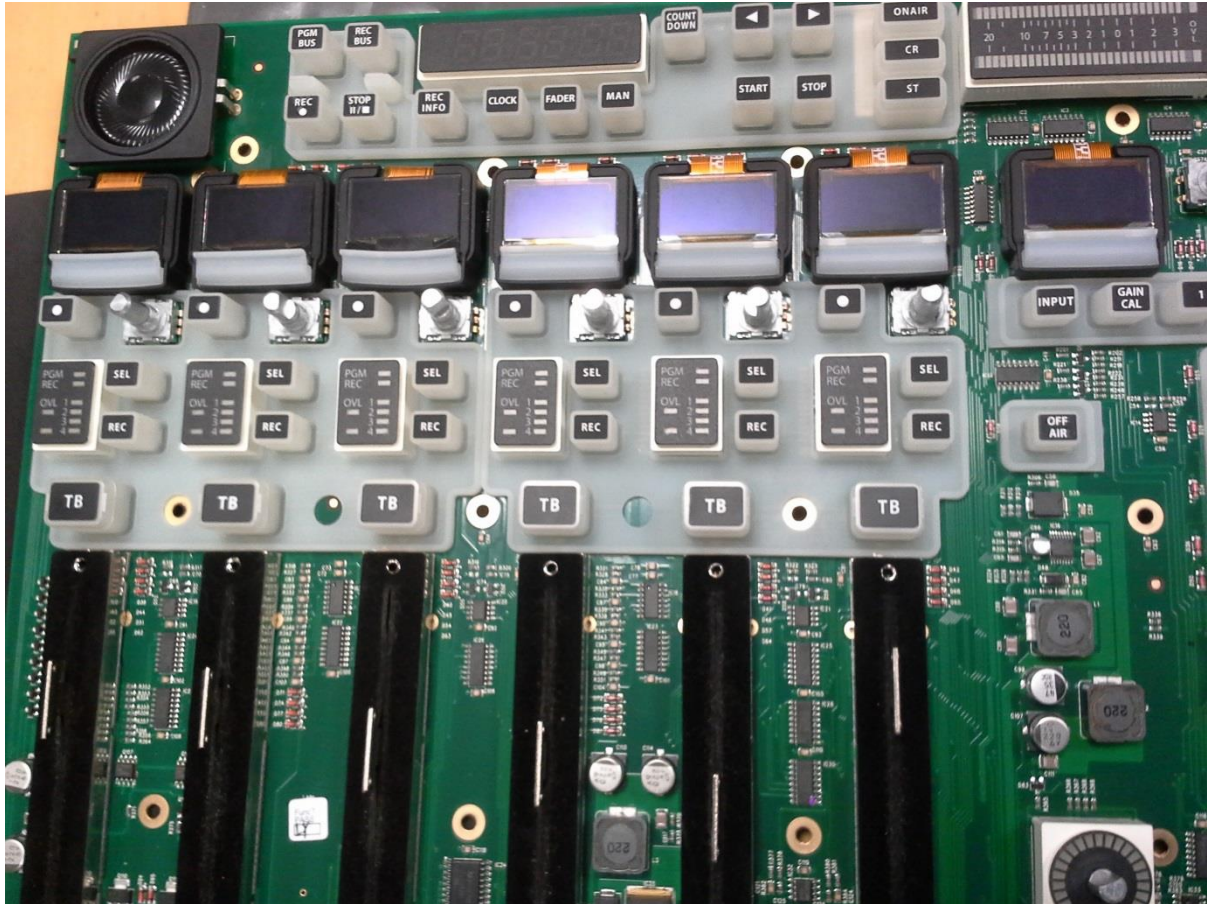
-When the update is performed and finished on the modules reboot the core.

6. In case of any question

Please feel free to contact **Harman Professional Technical Support**
hprotechsupportemea@harman.com.

Appendix 1

This photo demonstrates the differences of the OLED's on an OnAir 1500 6-fader module



Strip channel 1-2 has a new OLED with new type with a new rubber pad and lightpipe.

Strip channel 3 has a new OLED with old holder and lightpipe

Strip channel 4-6 has an old OLED with old holder and lightpipe.

Appendix 2

OLED replacement on OnAir 1500; 2500; 3000

OnAir 1500 central or extension module disassembly

- 1) Remove 2-3 screws from all edges (2-3 pieces of 3 mm hex screws).
- 2) Remove all black 2.5mm hex screws from the backplane.
- 3) Fix all display glasses with tape to prevent their falling off.
- 4) Remove all knobs and fadercaps
- 5) carefully remove the plastic holders from the edges of the PCB.
- 6) Carefully separate the plastic cover from the PCB.
- 7) If the display glasses falling off please fix their position with tape from their front side



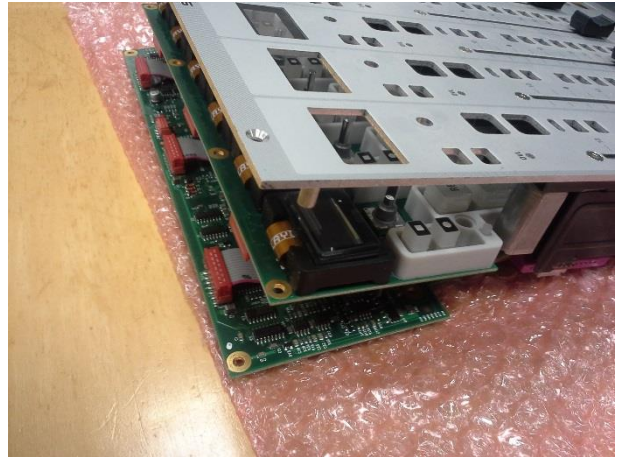
Any OnAir 2500-3000 module disassembly

There are only two differences

- First there are only 4 pieces 2mm screws on the 4 edges to remove the module.
- Second There are 2.5mm hex screws between the PCB and the Aluminium faceplate instead of plastic clips.

OLED replacement

- 1) To replace the OLED remove the rubber holder and lightpipe (if present) first.
- 2) The new OLED is a bit bigger The new OLED holder and lightpipe can be ordered separately
- 3) Disconnect the OLED's connector and replace.
- 4) Check the 4 small holes when replacing the rubber holder.



Reassemble the module by reversing all disassembly steps above.